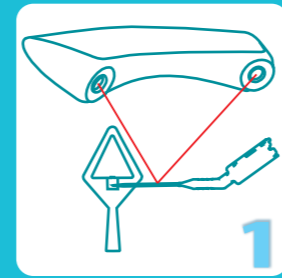


Combining all your surgical needs in one machine



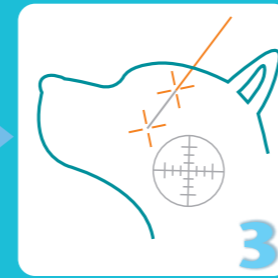
USER-FRIENDLY PLATFORM



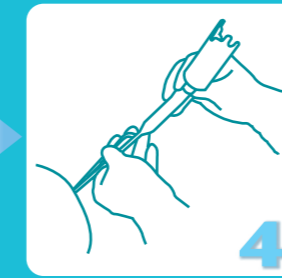
Easy Instrument Calibration



Fast Animal Registration



Surgical Path Creation



Accurate Surgery Execution

SYSTEM SPECIFICATION

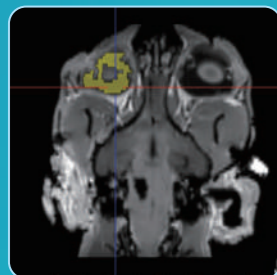
Tracking Unit Size	520mm x 182mm x 88mm	System Accuracy	Less than 2mm
Procart Size	470mm x 610mm x 1550mm	Power supply	110~230VAC, 50/60HZ
CPU	Intel Core i7 series or higher	Operating temperature	5°C~40°C
Monitor	Display Resolution: 2K , 2 input ports (DP & HDMI)	Transport and storage environmental	-10°C~50°C

Specifications are subject to change without notice.

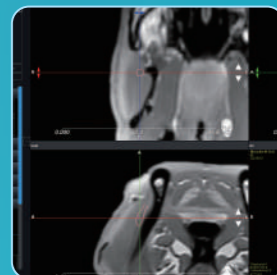
APPLICATION

Neuro Surgery / ENT Surgery / Tissue Biopsy / Tumor Resection Surgery

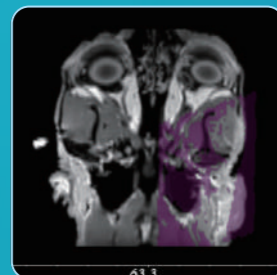
SAFE PLANNING AND EXECUTION



Tumor targeting



Nerve drawing



Mirroring



Pre-surgical planning



Apixia Corporation Company Address: 7F-1, 128, Sec.2, Dunhua S. Rd., Da-An Dist., Taipei City Taiwan R.O.C.
Office: +886-2-2702-2608 Fax: +886-2-2755-4919 Email: vet@apixia.asia www.apixiavet.com

Apixia Inc. Company Address: 18688 San Jose Ave. Industry, CA 91748 USA
Office: +1-626-810-9201 Fax: +1-626-810-9207 Email: info@apixia.com www.apixiavet.com

Apixia Japan Company Address: 1324, Ooida, Daian-cho, Inabe-shi, Mie-ken 511-0274, Japan
Office: +81-59-441-3080 Fax: +81-59-441-3081 Email: sales3@apixia.asia www.apixiavet.com

Apixia Europe Office: +32-5831-7464 Mobile: +32-4739-37167 Email: pascal@apixia.com www.apixiavet.com



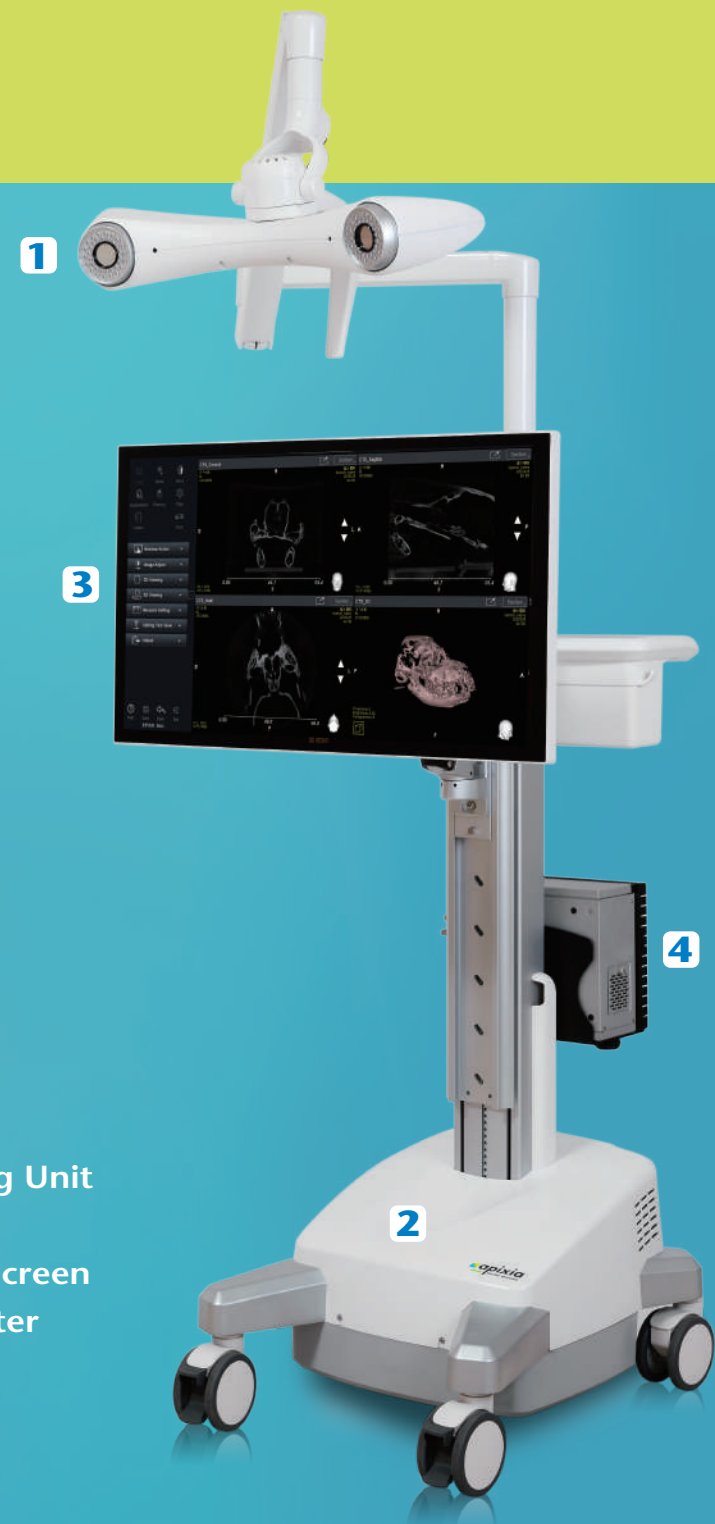
NaviVet™ REAL TIME NAVIGATION

Navigating the Way in Animal Surgical Care



STEREOTACTIC SURGERY

NAVIGATION SYSTEM



- 1 Tracking Unit
- 2 Procarr
- 3 Touch Screen
- 4 Computer

The Navivet combines real time state of the art navigation technology for perfect accuracy during complex surgical procedures.

- Fusion CT and MRI files to appreciate on screen soft and hard tissue intertwined for better reference.
- Guide surgeries on screen with the aid of an endoscope. Add distance extensions to the tip of your instruments for better distance calculation during surgery.
- Draw and trace nerves to avoid them during surgery.
- Color-mark abnormalities with the Segmentation Function, and create surgery paths and object-targeting procedures.
- Mirror healthy samples of bone into damaged areas to repair bone fracture and similar complications.

Reduces unnecessary tissue injuries by assisting veterinarians in minimally invasive surgeries. Improves surgical quality results and reduces the risk of post operative complications.



MORE ADAPTABILITY

+

The NaviVet is equipped with a universal adapter which connects with numerous animal surgical instruments.

LESS INVASIVE PROCEDURES

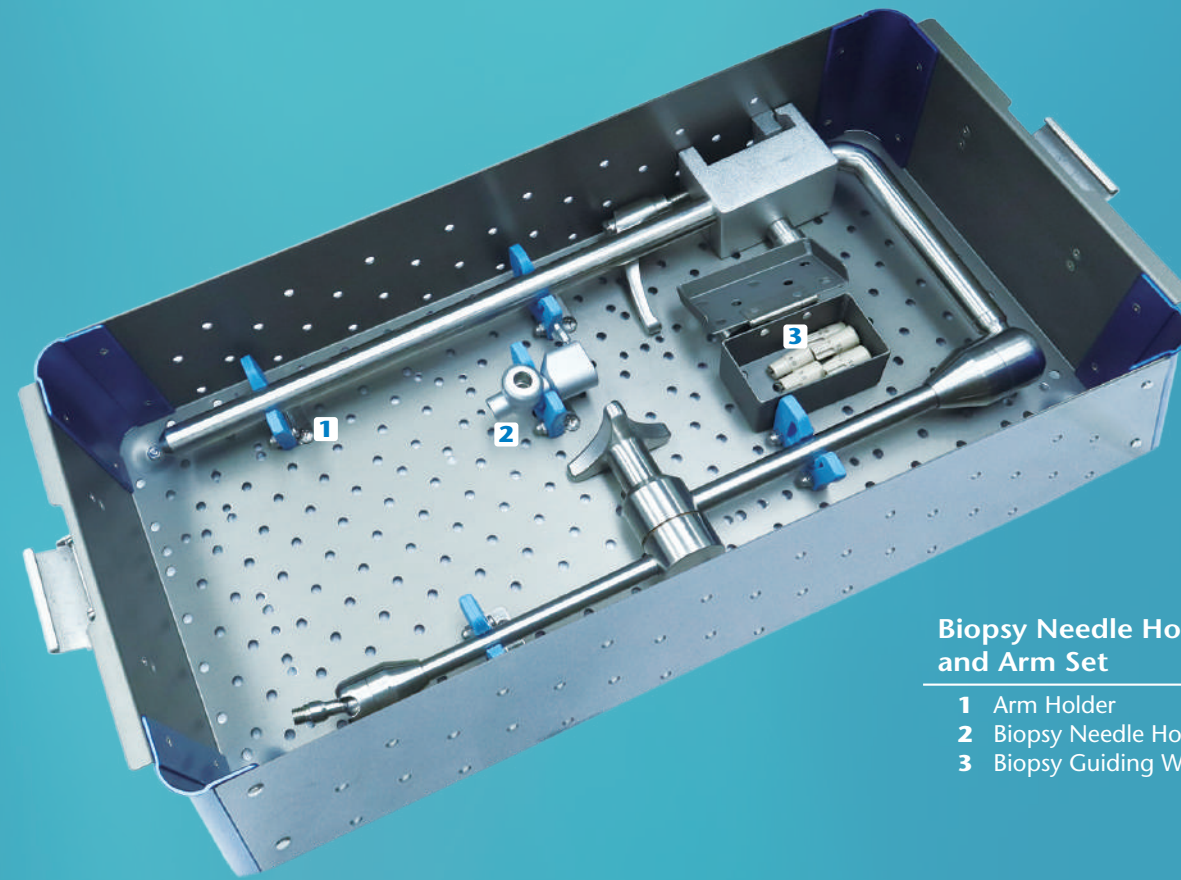
—

The NaviVet can assist veterinarians to achieve minimally invasive surgical practices. Faster recovery and less trauma.

INSTRUMENTS & CONSUMABLES

HIGH PERFORMANCE AND VALUE

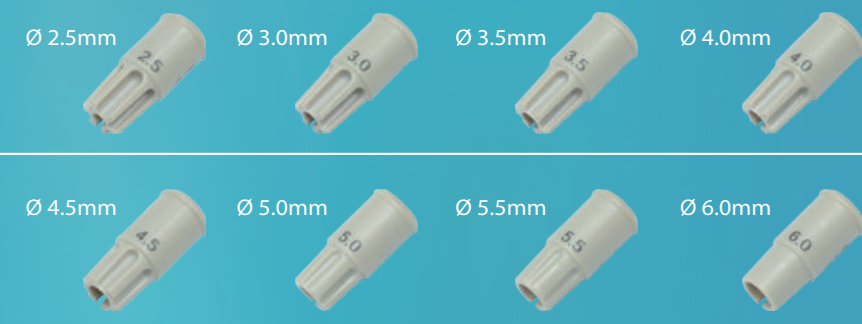
Optical space location technology – real time monitoring of instrument tip position, direction and distance of target areas. Navivet comes equipped with multiple instruments for multiple types of procedures. Universal adapter works with a variety of surgical instruments for maximum convenience. Navivet is also compatible with other 3rd party surgical instruments.



Biopsy Needle Holder and Arm Set

- 1 Arm Holder
- 2 Biopsy Needle Holder
- 3 Biopsy Guiding Washer

Biopsy Guiding Washer Size Chart



Main Sterilization Box

- 1 Adaptor 1625*
- 2 Adaptor 0616*
- 3 Adaptor 0312*
- 4 Adaptor 0106*
- 5 Instrument register set-clip
- 6 Probe register set-clip
- 7 Small tool box
- 8 Multi-angle probe (intraoperative probe)
- 9 Multi-angle probe (preoperative probe)
- 10 Adjustable guide holder

*Sold Separately

Skull Clamp

Specially designed rocker arm for use on animals.



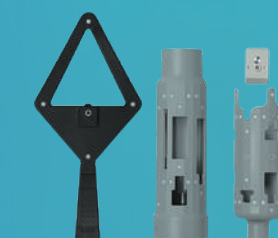
Disposable Consumables

Fixation Attachment



Implantation for tracking optical positioning element.

Reflecting Consumables



Disposable optical positions components for fast registration without complication.

Contents

Positioner Holding Tray

