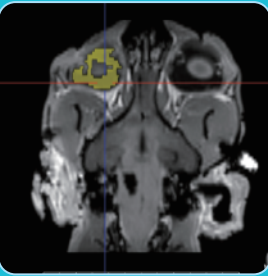


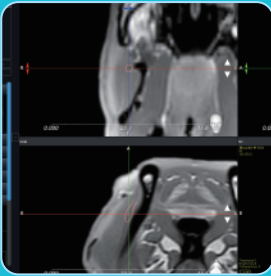
APPLICATION

Neuro Surgery / ENT Surgery / Tissue Biopsy / Tumor Resection Surgery

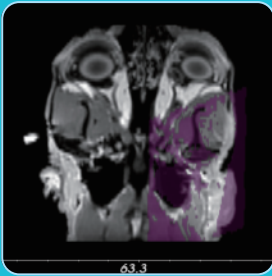
SAFE PLANNING AND EXECUTION



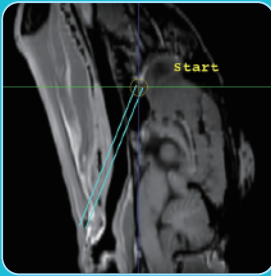
Tumor targeting



Nerve drawing



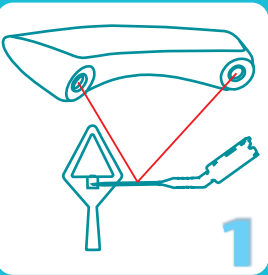
Mirroring



Pre-surgical planning



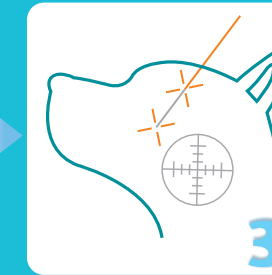
USER-FRIENDLY PLATFORM



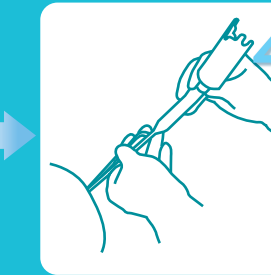
Easy Instrument Calibration



Fast Animal Registration



Surgical Path Creation



Accurate Surgery Execution

SYSTEM SPECIFICATIONS

System Accuracy	Less than 2mm
Tracking Unit Size	520mm x 155mm x 90mm
CPU	Intel Core i7 series or higher
Monitor	Display Resolution: 2K , 2 input ports (DP & HDMI)

Power supply	110~230 VAC, 50/60HZ
Operating temperature	5°C~40°C
Transport and storage environmental	-10°C~50°C
Specifications are subject to change without notice.	

Apixia Corporation Company Address: 7F-1, 128, Sec.2, Dunhua S. Rd., Da-An Dist., Taipei City Taiwan R.O.C.
Office: +886-2-2702-2608 Fax: +886-2-2755-4919 Email: vet@apixia.asia www.apixiavet.com

Apixia Inc. Company Address: 18688 San Jose Ave. Industry, CA 91748 USA
Office: +1-626-810-9201 Fax: +1-626-810-9207 Email: info@apixia.com www.apixiavet.com

Apixia Japan Company Address: 1324, Ooida, Daian-cho, Inabe-shi, Mie-ken 511-0274, Japan
Office: +81-59-441-3080 Fax: +81-59-441-3081 Email: sales3@apixia.asia www.apixiavet.com

Apixia Europe Office: +32-5831-7464 Mobile: +32-4739-37167 Email: pascal@apixia.com www.apixiavet.com



NaviVet™ REAL TIME NAVIGATION

Navigating the Way in Animal Surgical Care



STEREOTACTIC SURGERY

NAVIGATION SYSTEM

INSTRUMENTS & CONSUMABLES



- 1 Tracking Unit
- 2 Tracking Unit Cart
- 3 Touch Screen
- 4 Monitor Cart
- 5 Computer



MORE ADAPTABILITY

The NaviVet is equipped with a universal adapter which connects with numerous animal surgical instruments.

LESS INVASIVE PROCEDURES

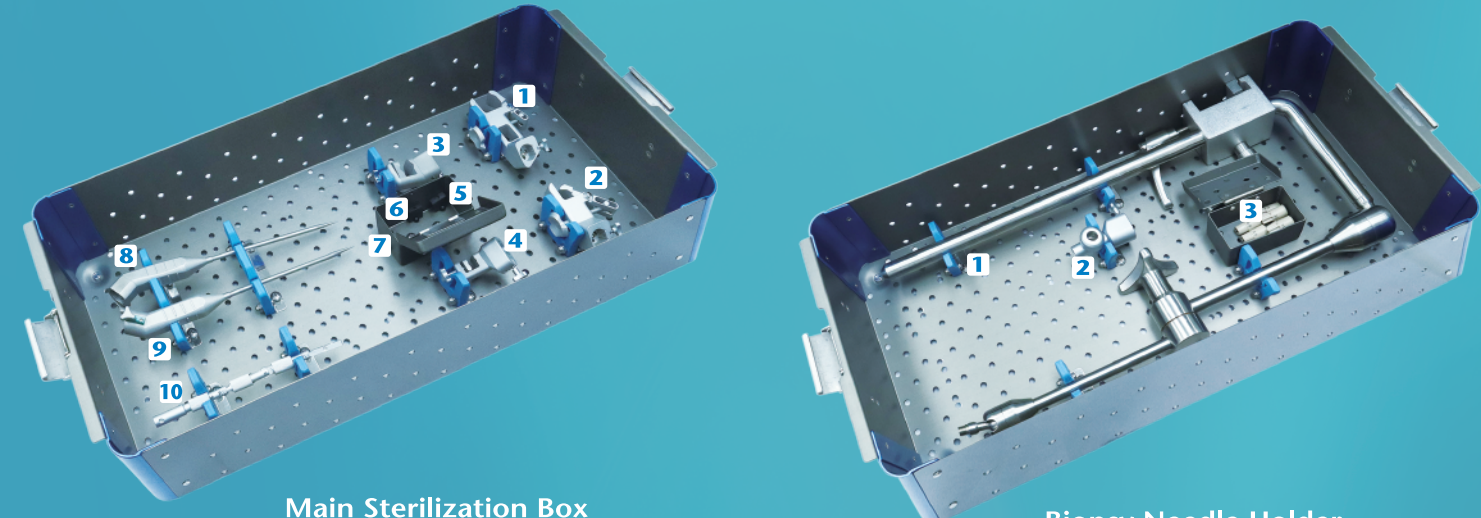
The NaviVet can assist veterinarians to achieve minimally invasive surgical practices. Faster recovery and less trauma.

HIGH PERFORMANCE AND VALUE

Optical space location technology – real time monitoring of instrument tip position, direction and distance of target areas.

NaviVet comes equipped with multiple instruments for multiple types of procedures. Universal adapter works with a variety of surgical instruments for maximum convenience.

NaviVet is also compatible with other 3rd party surgical instruments.



- Main Sterilization Box**

 - 1 Adaptor 1625*
 - 2 Adaptor 0616*
 - 3 Adaptor 0312*
 - 4 Adaptor 0106*
 - 5 Instrument register set-clip
 - 6 Probe register set-clip
 - 7 Small tool box
 - 8 Multi-angle probe (intraoperative probe)

- 9 Multi-angle probe (preoperative probe)
 - 10 Adjustable guide holder

*Sold Separately

Biopsy Needle Holder and Arm Set

 - 1 Arm Holder
 - 2 Biopsy Needle Holder
 - 3 Biopsy Guiding Waser

Biopsy Guiding Waser Size Chart

Ø 2.5mm	Ø 3.0mm	Ø 3.5mm	Ø 4.0mm	Ø 4.5mm	Ø 5.0mm	Ø 5.5mm	Ø 6.0mm



Disposable Consumables

Fixation Attachment	Reflecting Consumables	Duplisil
<p>Implantation for tracking optical positioning element.</p>	<p>Disposable optical positions components for fast registration without complication.</p>	<p>Thermoplastic molding material for individual models.</p>